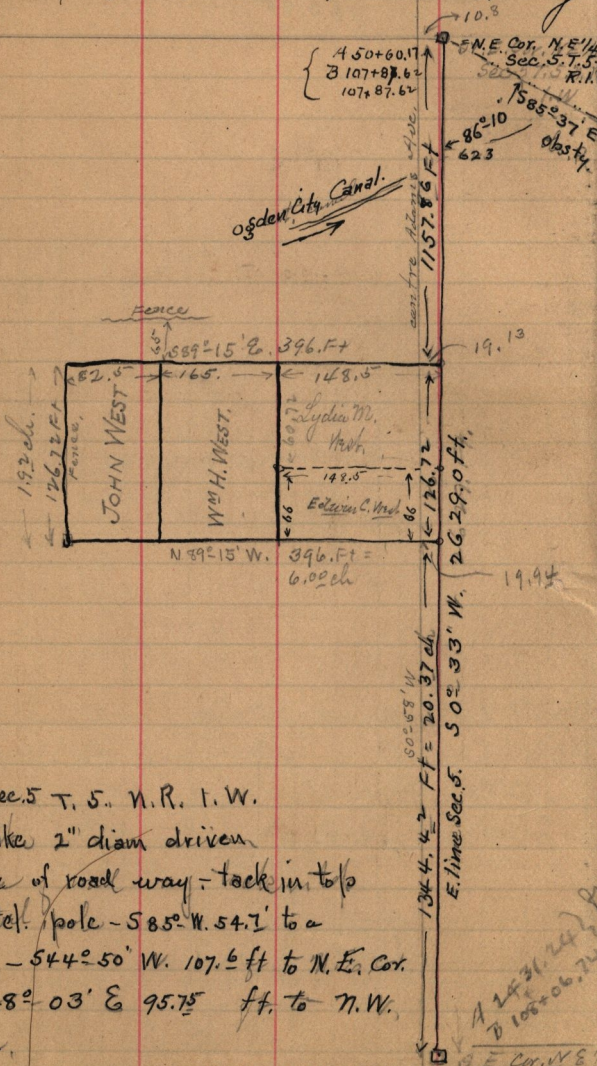


July 13<sup>th</sup> 1892

M-114. Wm Critchlow to Lydia Mariah West,  
Pt N.E. 1/4 Sec 5 - T. 5. N. R. 1. W. Bury 20.37  
ch. N. of S.E. cor. of id 1/4 Sec, on E. line. thence  
W. 6.00 ch N. 1.92 ch, E 6.00 ch, S. 1.92 ch. to beg.



ch<sup>6.00</sup>

ties to N. E. cor. Sec. 5 T. 5. N. R. 1. W.  
being an oak stake 2" diam driven  
beneath surface of road way - tack in top  
N. W. 14.1 ft. tel. pole -  $S 85^{\circ} W$  54.7' to a  
catalpa tree 1" diam -  $S 44^{\circ} 50' W$  107.6 ft to N. E. Cor.  
frame house -  $S 28^{\circ} 03' E$  95.75 ft. to N. W.  
Cor. frame house.

A 2431.24  
B 106+06.74  
E. Cor. W. E.